

GV I/O

Live Ingest & Playout Using COTS Hardware with GV STRATUS



GV I/O is a high-performance, cost-effective, COTS (commercial off the shelf) ingest and playout platform tailored for fast-turn production workflows on a 1 RU server, with SMPTE ST 2110 support and up to four SD or HD channels or three UHD channels.

Simplicity — GV I/O™ from Grass Valley® is designed with a streamlined workflow and seamless integration in mind. Built on a COTS ingest and playout platform with an evolving feature set, GV I/O offers integration with IT-based storage via Grass Valley’s AMS range of storage and can play back and record content over traditional SDI, SMPTE ST 2110 and web streams, all on COTS hardware.

Flexibility — Built for the future with limitless flexibility, GV I/O offers the agility to power your broadcast workflow. With flexibility through licensing, while offering industry leading codec versatility, GV I/O answers the call for today’s workflows, and will work with GV STRATUS® or under third-party automation control using AMP or VDCP.

Scalability — GV I/O can scale to meet the workflow demands of newsroom productions regardless of the scope or complexity.

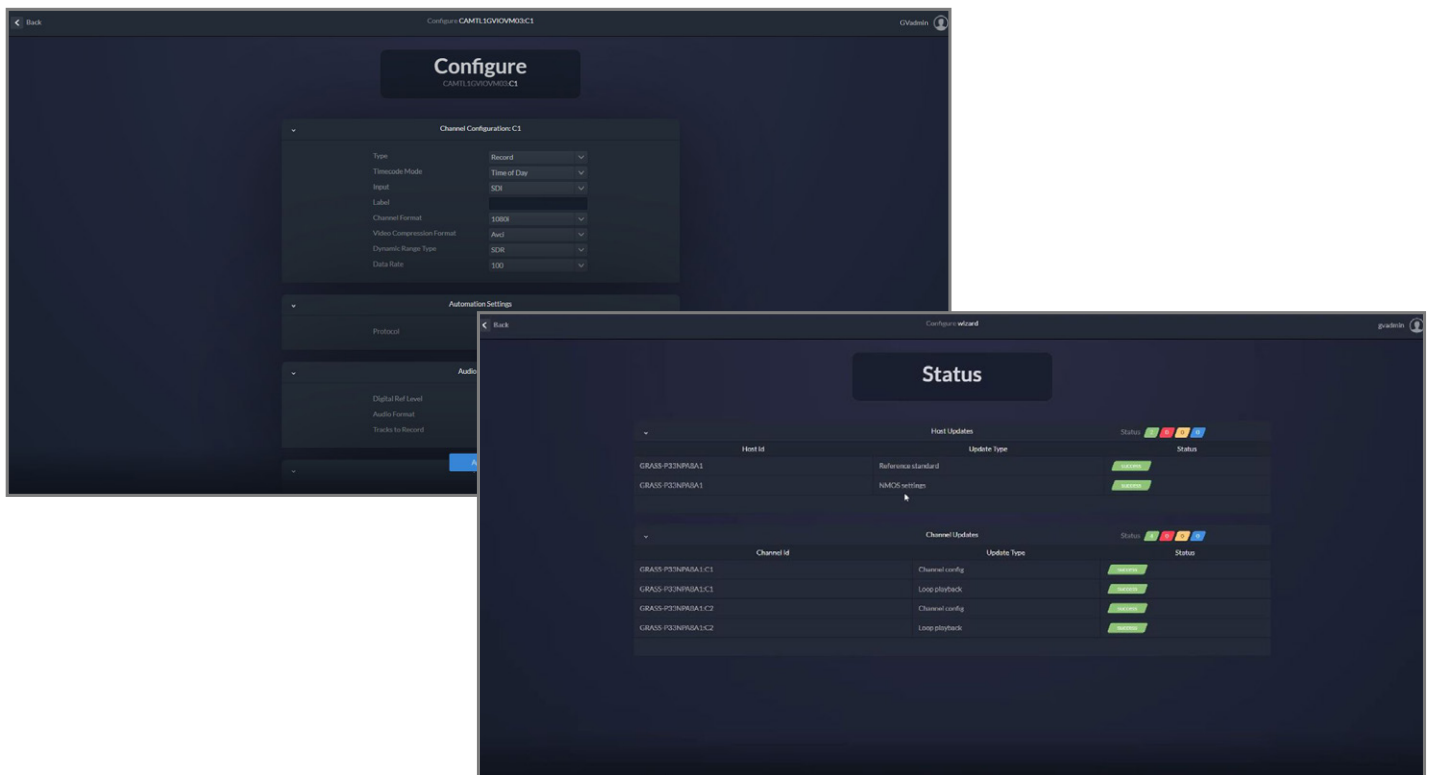
Reliable and Cost-efficient — With redundant power supplies, hot-swappable drives, flash-based storage and RAID-5, GV I/O is designed for on-demand reliability. CPU utilization is roughly 50% of other servers in the market, giving you valuable cost-efficiency in an easy to deploy solution.

Key Features

- Highest density UHD COTS platform in a 1 RU footprint:
 - SMPTE ST 2110 single raster UHD
 - NMOS support
 - AVC Class 300 support
- Access media immediately:
 - Fast turnaround editing
 - Full high-resolution quality and proxy workflow availability
 - Deliver media while recording to break stories faster
- Web-based management configuration tool:
 - Configure multiple systems from a single UI
 - Codec selection
 - Select proxy quality
- **Four-channel configurations:**
 - SD:
 - DV and D10 (IMX)
 - DV, DVCAM, DV25, DV50
 - HD: DCAM, XDCAM HD, XDCAM EX, XDCAM 422, DVCPRO HD, AVC-Intra, DNxHD
 - UHD:
 - XAVC-I Class 300, UHD, 2160p59.94 and 2160p50
 - Channels: 2 in and 1 out
- Network resiliency through low-bandwidth
- Import/export all formats as MXF OP1a, SMPTE ST 360 (GXF) or QuickTime
- Preservation of ANC data
- Full multichannel audio support – 16 audio tracks per video channel
 - 64-channel support in SMPTE ST 2110 as 32 pairs

Functionality	K2 Summit 3G	GV I/O
Supported on COTS hardware	✗	✓
Codecs offered as standard option	✗	✓
Software deployable VM*	✗	✓
Up/down/crossconversion	✓	✓
32 channels of audio	✓	✓
Real-time proxy generation	✓	✓
Direct read/write to/from SAN	✓	✓
Growing file support	✓	✓
3G 1080p	✓	✓
SMPTE ST 2110 UHD single raster support	✗	✓
IP with SMPTE ST 2110	✗	✓
Recording of web streams	✗	✓
Supports VDCP control	✓	✓
Supports AMP control	✓	✓

* VM OVA (GVIO-SW-VM) – The GVIO-SW-VM software option is a packaged VM OVA that supports SD, 720p and 1080i with currently supported codecs as a 2 in/1 out configuration via SMPTE ST 2110 only. It has been validated on Cisco UCS C240 hardware. SDI, UHD and 1080p are not supported at this time.



Specifications

Video I/Os

4 SD/HD/3G-SDI channels record channels DIN 1.0/2.3 connectors

SD-SDI: SMPTE ST 259, ITU R601, 525/625 line, 10-bit

HD-SDI: SMPTE ST 292, 10-bit

3G-SDI:

SMPTE ST 424, 10-bit

SMPTE ST 2110-20 Uncompressed Video over IP

SMPTE 2110-30 PCM Audio over IP

SMPTE ST 2110-40 Ancillary Data over IP

Formats

(SD) 525i59.94

(SD) 625i50

(HD) 720p50/59.94

(HD) 1080i50/59.94

(3G Level A) 1080p50/59.94

(UHD) 2160p59.94 and 2160p50

Compression Types

SD:

DVCAM, DVCPRO25, DVCPRO50

D10 (IMX) 30/40/50 Mb/s

HD:

XDCAM HD (18, 25, 35 Mb/s)

XDCAM HD 4:2:2 (50 Mb/s)

XDCAM EX

DVCPRO HD

AVC-Intra 50/100

AVC-Intra Class 100 1080p50/60 Level A (optional)

DNxHD 115, 120, 145, 175, 185, 220 Mb/s

UHD:

XAVC-I Class 300

Audio

Up to 64 tracks (32 pairs) SMPTE ST 2110

Up to 16 tracks per channel

Input: 48 kHz, 16- or 24-bit digital audio=PCM

Reference Genlock

Blackburst analog and tri-level sync

Single DIN 1.0/2.3 connector

Media Exchange

MXF OP1a and GXF (SMPTE ST 360)

Power Requirements

Dual 750W power supplies

Note: UHD storage is not validated for existing GV AMS Elite (K2 SAN) storage.

Ordering

Base Servers

GVIO-HW-SV-01-HD

GV I/O Turnkey server for HD workflows. Includes Nvidia A4000 GPU card for proxy generation. Supports up to 4 channels. Requires either EC9733 for SDI workflows or EC9733 for SMPTE ST 2110 workflows.

GVIO-HW-SV-02-UHD

GV I/O Turnkey server for UHD workflows. Includes Matrox M264 S3 for proxy generation - supports 2 channels in and 1 channel out. Requires EC9733 Mellanox card and SFP-25G transceivers.

VM OVA

GVIO-SW-VM

GV I/O Software Only. Deployable VM OVA. Requires VM Ware on host. Validated only on Cisco UCS C240 hardware. Supports SMPTE ST 2110 only with a configuration of 2 in/1 out. UHD and 1080p not supported. Up to a maximum of x3 GVIO-SW-IP-CH licenses need to be ordered. A Rivermax VM license is needed, if not already available, then GVIO-SW-OPT-RMAX is required

GVIO-SW-OPT-RMAX

Rivermax VM software license including a year of Silver support

Options

EC9735

SDI expansion card — Deltacast video card (PCI-express). Provides 8 SDI ports independently configurable as input or output.

EC9733

IP expansion card — ConnectX-6 NIC — Dual 10G/25G NVIDIA/Mellanox IP interface card with SFP+ interfaces. Requires SFP-10G or SFP-25G (Must use 25G SFP for UHD). Includes Rivermax license and silver 1 year support.

GVIO-HW-M264-FK

Matrox M.264 3 codec card upgrade for UHD support. Replaces NVIDIA P2000 card

SFP-10G

Two (2) 10 GbE SFP modules required for EC9733 card

SFP-25G

Two (2) 25 GbE SFP modules required for EC9733 card

SSD-1920

Internal 1.92 TB SSD drive

SSD-3840

Internal 3.84 TB SSD drive

GVIO-SW-ISCSI

Connection required to add GV I/O to an older K2 SAN using Qlogic TOE card. SNFS 6 systems only. K2 Summit 10.1.2 or later software

GVIO-SW-SN-LAN

SNFS connection required to add GV I/O to a new K2 SAN (no TOE card). K2 Summit 10.1.2 or later software. Server 2016/SNFS 6 only

GVIO-SW-IP-CH

GV I/O per channel IP license – for HD only (maximum 4 per server)

GVIO-SW-UHD-CH

GV I/O per channel UHD license (maximum 3 per server, maximum 2 in)

GVIO-SW-SDI-CH

GV I/O per channel SDI license (maximum 4 per server)

GVIO-SW-1080P-CH

GV I/O per channel 1080p license (maximum 2 per server). GVIO-SDI-CH or GVIO-IP-CH are a prerequisite

Note: When using 1080p channels, a maximum of 2 channels is recommended.

GVIO-SW-WEB-CH

GV I/O per channel web license (ingest only, maximum 4 per server)

GVIO-SW-HD

GV I/O software. Required for GVIO-HW-SV-01-HD

GVIO-SW-UHD

GV I/O software. Required for GVIO-HW-SV-02-UHD

This product may be protected by one or more patents. For further information, please visit: www.grassvalley.com/patents

DS-PUB-3-0678A-EN

Grass Valley®, GV® and the Grass Valley logo are trademarks or registered trademarks of Grass Valley USA, LLC, or its affiliated companies in the United States and other jurisdictions. Grass Valley products listed above are trademarks or registered trademarks of Grass Valley USA, LLC or its affiliated companies, and other parties may also have trademark rights in other terms used herein. Copyright © 2018-2023 Grass Valley Canada. All rights reserved. Specifications subject to change without notice.

www.grassvalley.com Join the Conversation at GrassValleyLive on [Facebook](#), [Twitter](#), [YouTube](#) and Grass Valley on [LinkedIn](#)